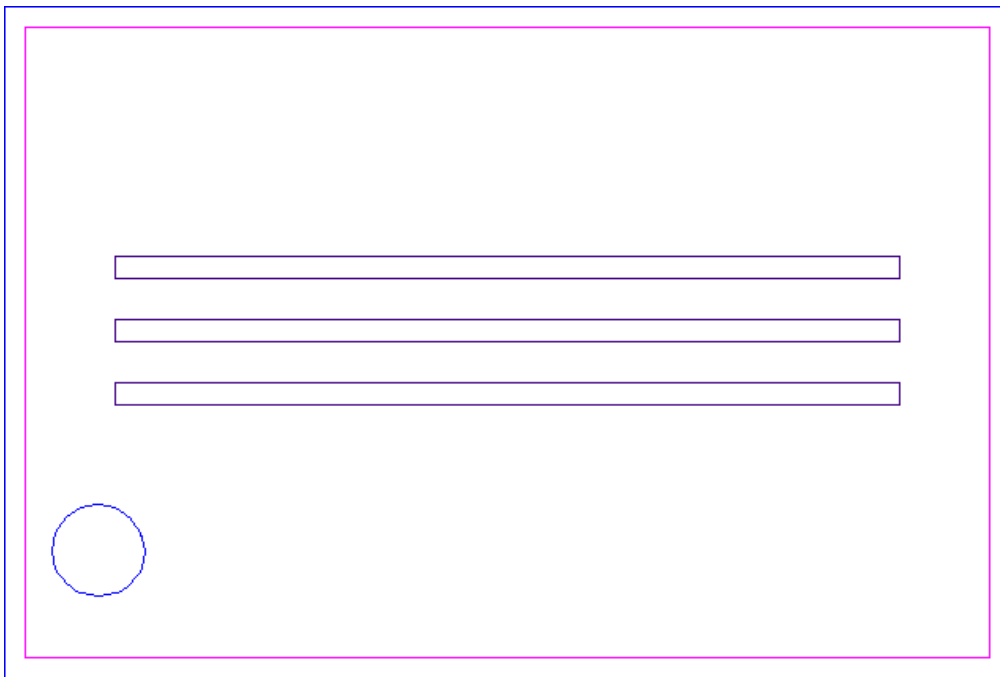


DRAM Component Mark Reference

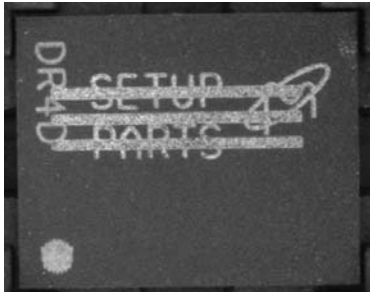
SpecTek mark reference document: This document is for reference to actual mark layouts and product images.

XBA: 3 line mark as marked for production

The 3 lines should strike out previous mark



Actual image of XBA: mark: Content under the line will vary based on original part type and mark.



XAA: Generic mark as marked for production

Mark Layout: Mark content will vary based on part type. Refer to [DRAM FBGA Mark Decoder](#) for actual component mark codes.



Actual image of XAA:





XCB: COB (Chip on Board) mark as marked for production

Mark Layout: Not available for this part type.

Actual image of XCB:



PRN: Spectek standard mark as marked for production

Mark Layout: Mark content will vary based on part type. Refer to [DRAM FBGA Mark Decoder](#) for actual component mark codes.



Actual image of PRN:



PRA: Spectek standard mark as marked for production

Mark Layout: Mark content will vary based on part type. Refer to [DRAM FBGA Mark Decoder](#) for actual component mark codes.



Actual image of PRA:



SGG: Spectek standard mark as marked for production

Mark Layout: Mark content will vary based on part type. Refer to [DRAM FBGA Mark Decoder](#) for actual component mark codes.



Actual image of SGG:



PRM: Spectek standard mark as marked for production

Mark Layout: Mark content will vary based on part type. Refer to [DRAM FBGA Mark Decoder](#) for actual component mark codes.



Actual image of PRM:

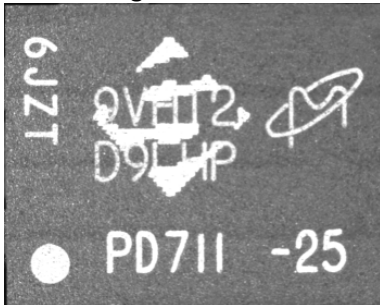


SMG: Spectek standard mark as marked for production

Mark Layout: Mark content will vary based on part type. Refer to [DRAM FBGA Mark Decoder](#) for actual component mark codes.



Actual image of SMG:





SNL: Spectek standard mark as marked for production

Mark Layout: Mark Layout not available. Refer to [DRAM FBGA Mark Decoder](#) for actual component mark codes.

Actual image of SNL:

